

Hoffman

CALIFORNIA-INTERNATIONAL FABRICS

PALETTE of the Season



Wine Club

designed exclusively for Hoffman Fabrics by

Jean Impey

Finished Size: 37.5" x 23"

THE
WINE CLUB
HOFFMANS PALETTE OF THE SEASON

Fabric Requirements



1895 311-Lake
1/8 Yard



1895 227-Sprout
1/4 Yard



1895 538-Nirvana
1/4 Yard



1895 377-Spinach
1/4 Yard



1895 239-Persia
1/8 Yard



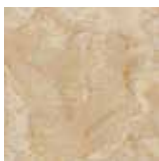
1895 225-Rosemary
3/8 Yard



1895 501-Sand Dollar
1/4 Yard



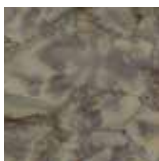
1895 30-Lilac
1/4 Yard



1895 485-Funnel Cake
1/8 Yard



1895 46-Plum
1/4 Yard



1895 80-Taupe
5/8 Yard*
* includes binding



1895 390-Zinfandel
1/8 Yard

THE
WINE CLUB
HOFFMANS PALETTE OF THE SEASON

This Wine Club wall-hanging was inspired by a collection of a dozen Hoffman Hand-dyed Watercolors and naturally lends itself to a wine theme. This project is paper-pieced and offers a Hoffman Wine label that can be printed onto our Watercolors. The method shown is decorative only and NOT permanent or waterproof.

Experience of Paper-Piecing is recommended. Read the instructions carefully before cutting.

The finished wall-hanging measures 23" x 38". It is made up of three rows of seven blocks for a total of 21 blocks and has a 1" finished border.

Paper piecing is just one of the names used to describe the broad category of foundation piecing, where patches are sewn directly onto a foundation template, an exact replica of an entire quilt block or portion of a block.

Position your fabric on the unprinted side of a bottle pattern with edges overlapping drawn lines. The fabric's placement is easy to see by holding the foundation up to the light.

Seams are sewn on the front of the foundation template, directly onto the lines, and the overlapped edges of fabric on the back become seam allowances. If you position fabric carefully and sew on the lines, your blocks will always be perfect.

Begin by printing 11 copies of the duo bottles pattern. From the Taupe fabric, cut (4) 1½" WOF (Width of Fabric) strips for the outer borders and 2½" WOF strips for binding. The leftover will be used in your block.

Using a small stitch on your machine, (1.2-1.4) is always a good idea when paper-piecing. You will eventually remove the paper from the backside, and it will be easier if there are more perforations from your needle.

Starting with **Section A** assemble your fabrics to the back side of your pattern.

- Place **A1*** fabric over the A1 pattern area, making sure that you have approximately $\frac{1}{4}$ " added to overlap the lines of A3, A2 and A5. Notice that there is already a quarter inch seam allowance surrounding the perimeter of the block.
- Now take a piece of fabric that is oversized for the A2 shape and putting right sides together lay it over the sewing line that is in between A1 and A2. Turning your pattern over to the printed side while holding in place, sew directly on that line. Turn your pattern over and press the A2 piece open and it should now cover the A2 area including all seam allowances. You can then trim your area making sure you leave your $\frac{1}{4}$ " seam allowances intact. Proceed to A3 using the same method and changing fabrics where needed, according to the pattern.

Section B, assemble in order starting with B1 which is the top of the bottle, set aside.

Continue with **Section C** and finish with **Section D**

You are now ready to sew Section B to Section C and Section D to Section A. When those are assembled, finish off by sewing the two halves together. Press, trim and start on block two.

When all 21 blocks are finished, begin sewing them together in rows. You can now carefully remove the paper.

If making the wall hanging, cut two $1\frac{1}{2}$ " x $36\frac{1}{2}$ " Taupe strips, sew one to the right and one to the left side of your wine cabinet.

Finish with two $1\frac{1}{2}$ " x $23\frac{1}{2}$ " Taupe strips, sew one to the top and one to the bottom.

Press, then add batting and backing and quilt as desired. Attach binding.



If making the table runner, cut two 1½" x 12" Taupe strips and attach to the short sides. Piece the remaining strips. Cut two 1½" x 65½" and add to the long edges.

Table runner finishes at 65" x 14"



Press, then add batting and backing and quilt as desired. Attach binding.

Designed for you by Jean Impey
www.sewjean.com

***A1** is the wine label area and is designed using the Sand Dollar Watercolor. If you would like to make a label using this Hoffman image, please remember that it will not be washable, and we recommend that you do not use any steam on it as well. Cut an 8½” x 11” piece of your Sand Dollar, using starch to make it flat. Iron that to an 8½” x 11” piece of freezer paper placing the fabric on the slick/shiny side with a hot iron. It should stick and become flat. Your Ink-jet color printer will see this as a piece of paper, and you should now be able to run it through your printer.



